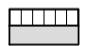
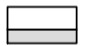





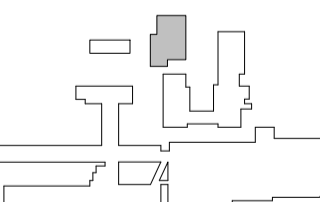


RRA_K01_L10_H1_T99_E3_001

Signaturforklaring:

-  220 mm hård isolering
250 mm støttemur iht. ing.
-  Ydervæg: Isolering iht. BR18 og facade iht. Lokalplan 534
Betonbagmur iht. ing.
-  Beton indervæg 300 mm iht. ing.
-  Beton indervæg 200 mm iht. ing.
-  145 mm gipsvæg
-  95 mm forsatsvæg
-  Støttemur

Rev.	Dato	Udarb.	Godk.	Ændringer



midt regionmidtjylland

Sagsnr.: 18100 Tegningsnr.: RRA_K01_L10_H1_T99_E3_001
 Dispositionsforslag
 Randers sterilcentral
 Tekniketage - etage 03
 Mål: 1 : 100
 Udarb.: bfe
 Godk.: agu
 Dato: 2018-11-26
 Rev. dato:
 Rev.:
 Etablering af trappe med dertilhørende elefantrist foran eksisterende der i facaden. Nyt elefantrist repos forbindes med en trappe til eksisterende repos ved eks. kældertrappe.